



MANCHESTER ⁶⁰⁻¹ 60'



ELEV. B • 5,206 SQ. FT.



ELEV. A • 5,212 SQ. FT.



ELEV. C • 5,187 SQ. FT.



MANCHESTER

60-1

5,212 SQ. FT.
ELEV. A

5,206 SQ. FT.
ELEV. B

5,187 SQ. FT.
ELEV. C

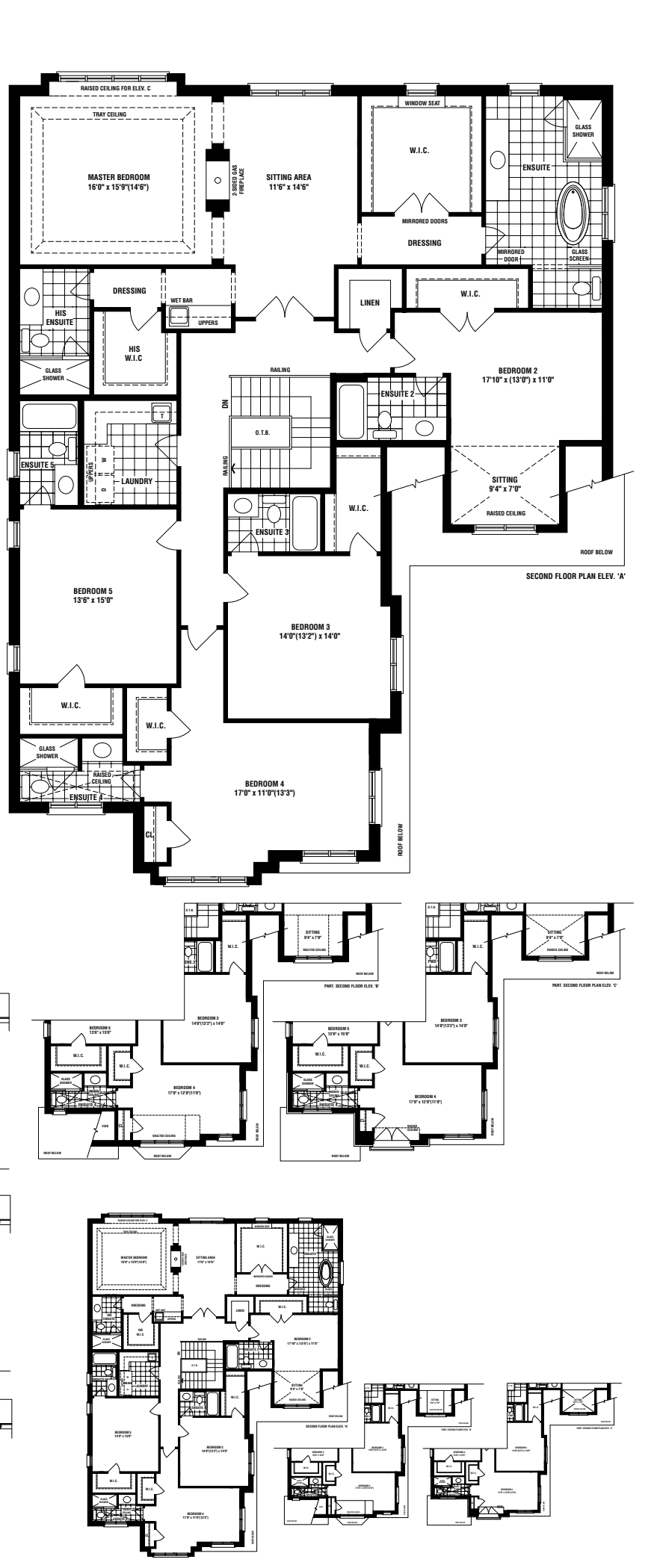
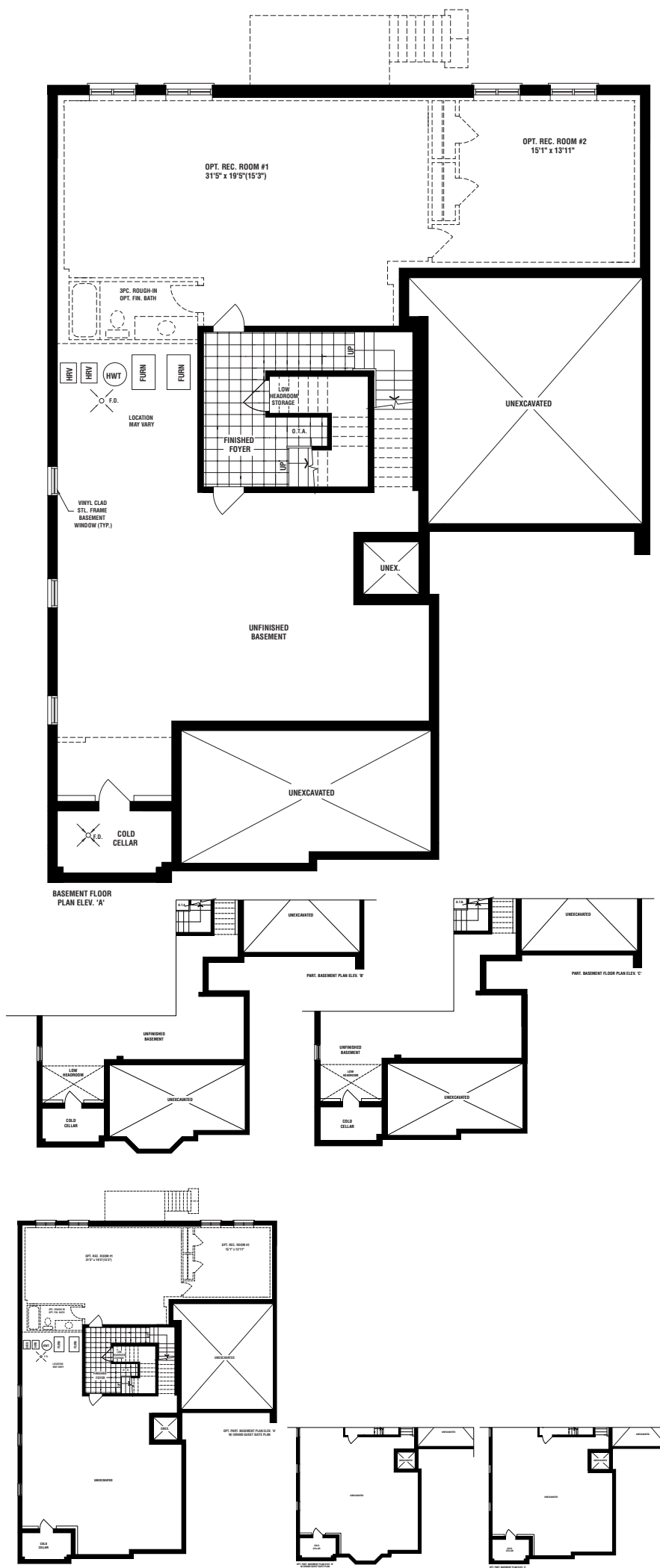
**OPT. WITH
GRAND GUEST SUITE**

5,481 SQ. FT.
ELEV. A

5,492 SQ. FT.
ELEV. B

5,456 SQ. FT.
ELEV. C

INCLUDES 212 SQ. FT.
OF FINISHED FOYER IN BASEMENT



Materials, specifications, and floor plans are subject to change without notice. All house renderings are artist's conceptions. All floor plans are approximate dimensions. Actual usable floor space may vary from the stated floor area. Number of steps on front elevation may vary depending on grade conditions. E. & O.E.