



# CAMBRIDGE 60'



ELEV. B ▪ 5,609 SQ. FT.



ELEV. A ▪ 5,606 SQ. FT.



ELEV. C ▪ 5,595 SQ. FT.





# CAMBRIDGE

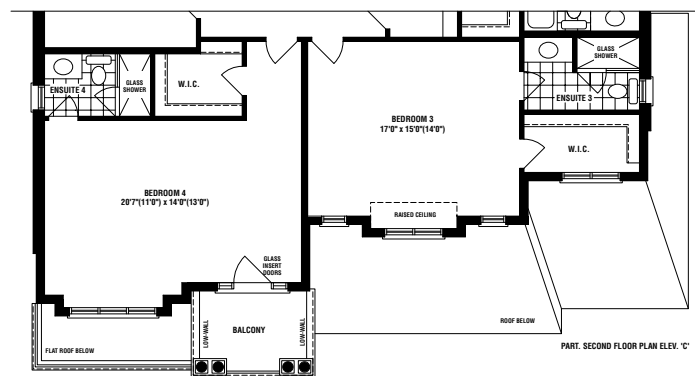
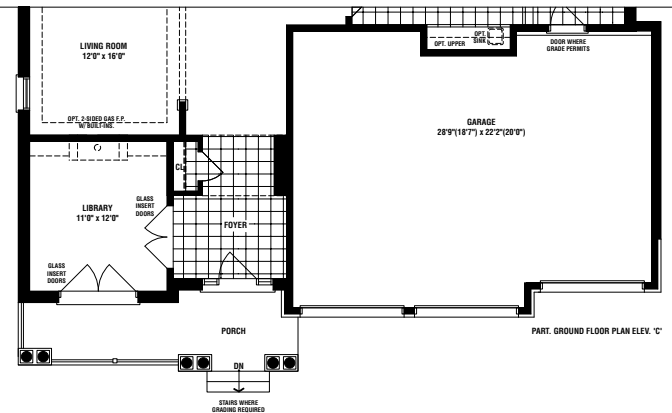
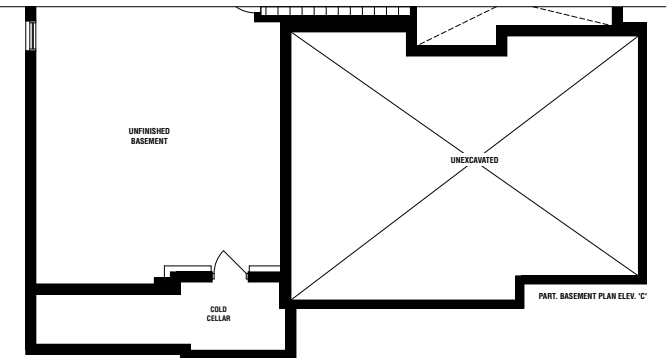
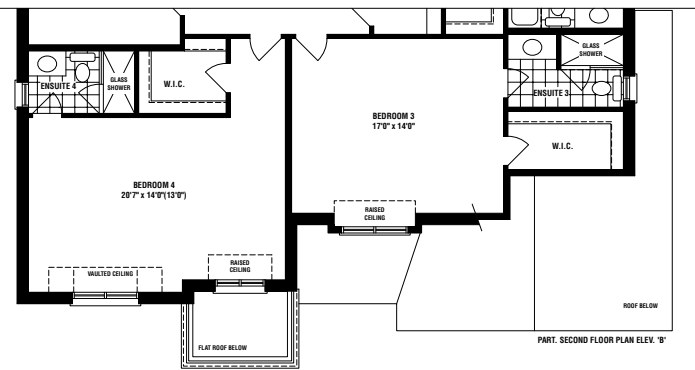
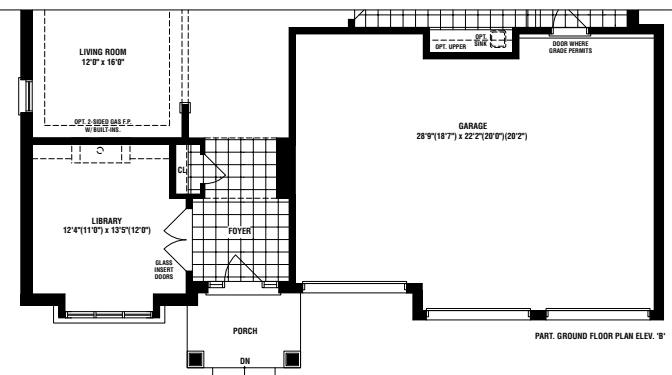
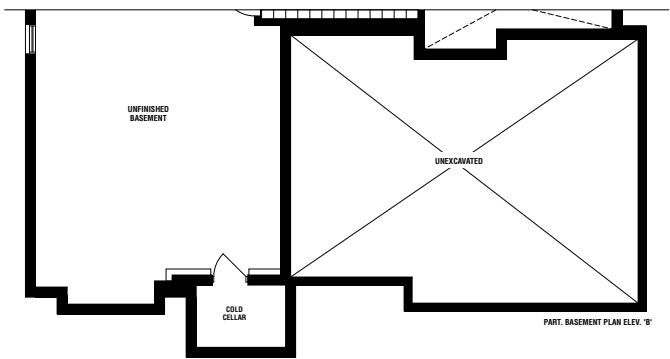
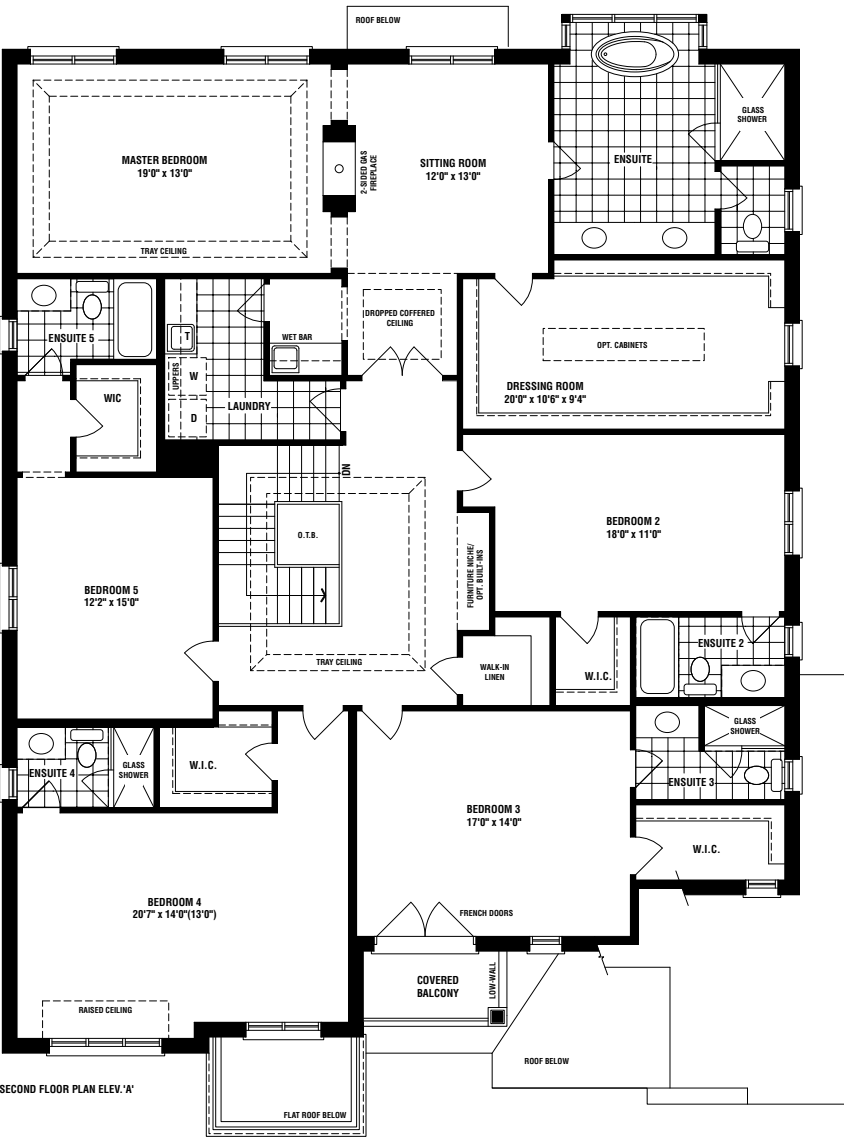
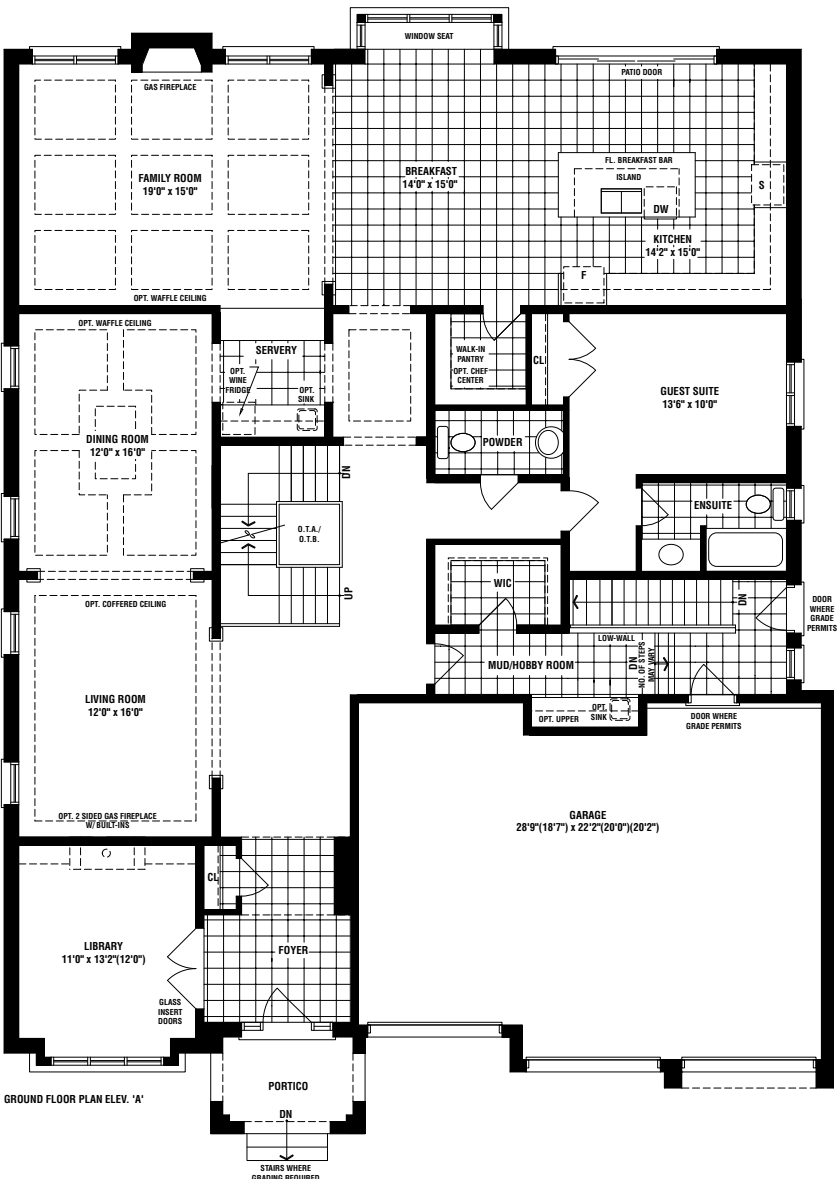
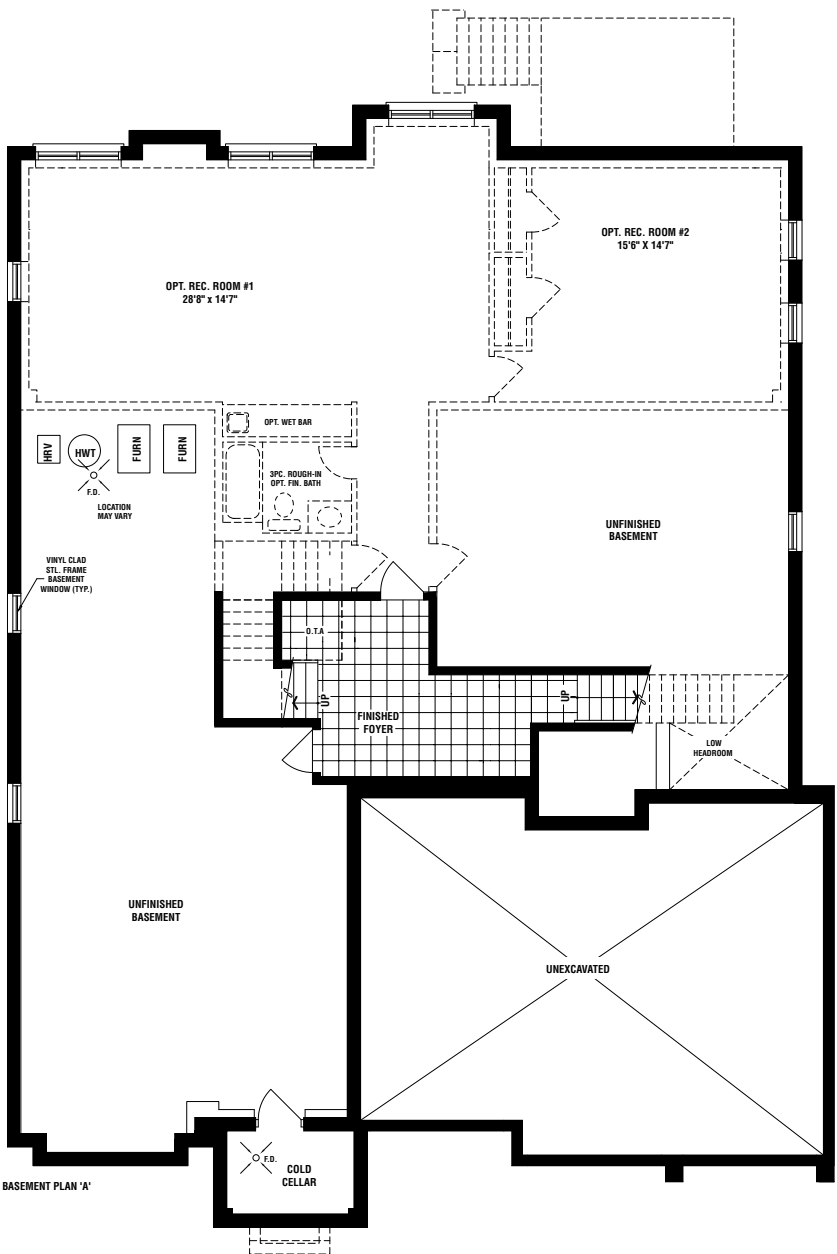
60-2

5,606 SQ. FT.  
ELEV. A

5,609 SQ. FT.  
ELEV. B

5,595 SQ. FT.  
ELEV. C

INCLUDES 209 SQ. FT.  
OF FINISHED FOYER IN BASEMENT



Materials, specifications, and floor plans are subject to change without notice. All house renderings are artist's conceptions. All floor plans are approximate dimensions. Actual usable floor space may vary from the stated floor area. Number of steps on front elevation may vary depending on grade conditions. E. & O.E.