

MARGAUX VB-3



ELEV. B • 3,234 SQ. FT.



ELEV. A • 3,217 SQ. FT.



ELEV. C • 3,224 SQ. FT.



MARGAUX

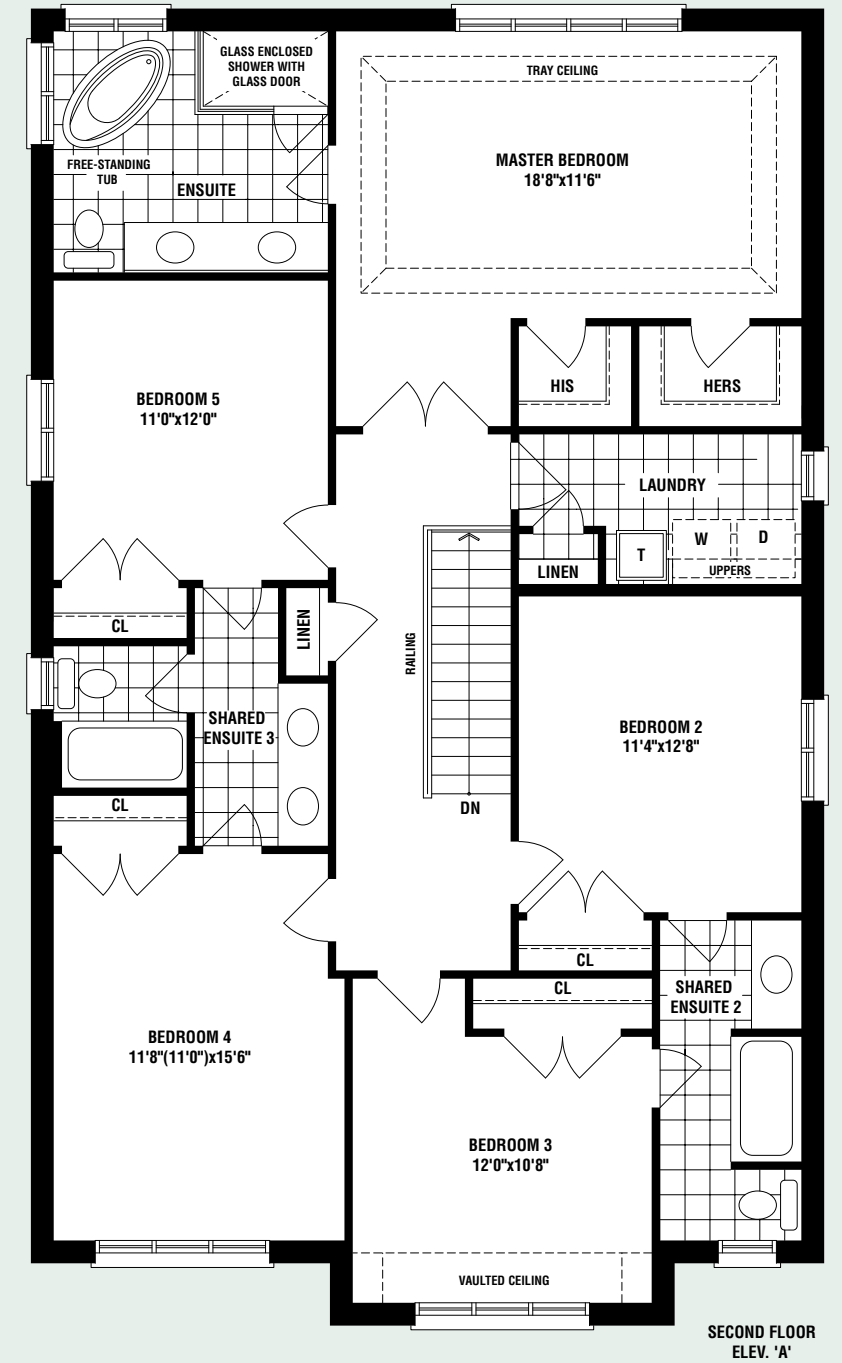
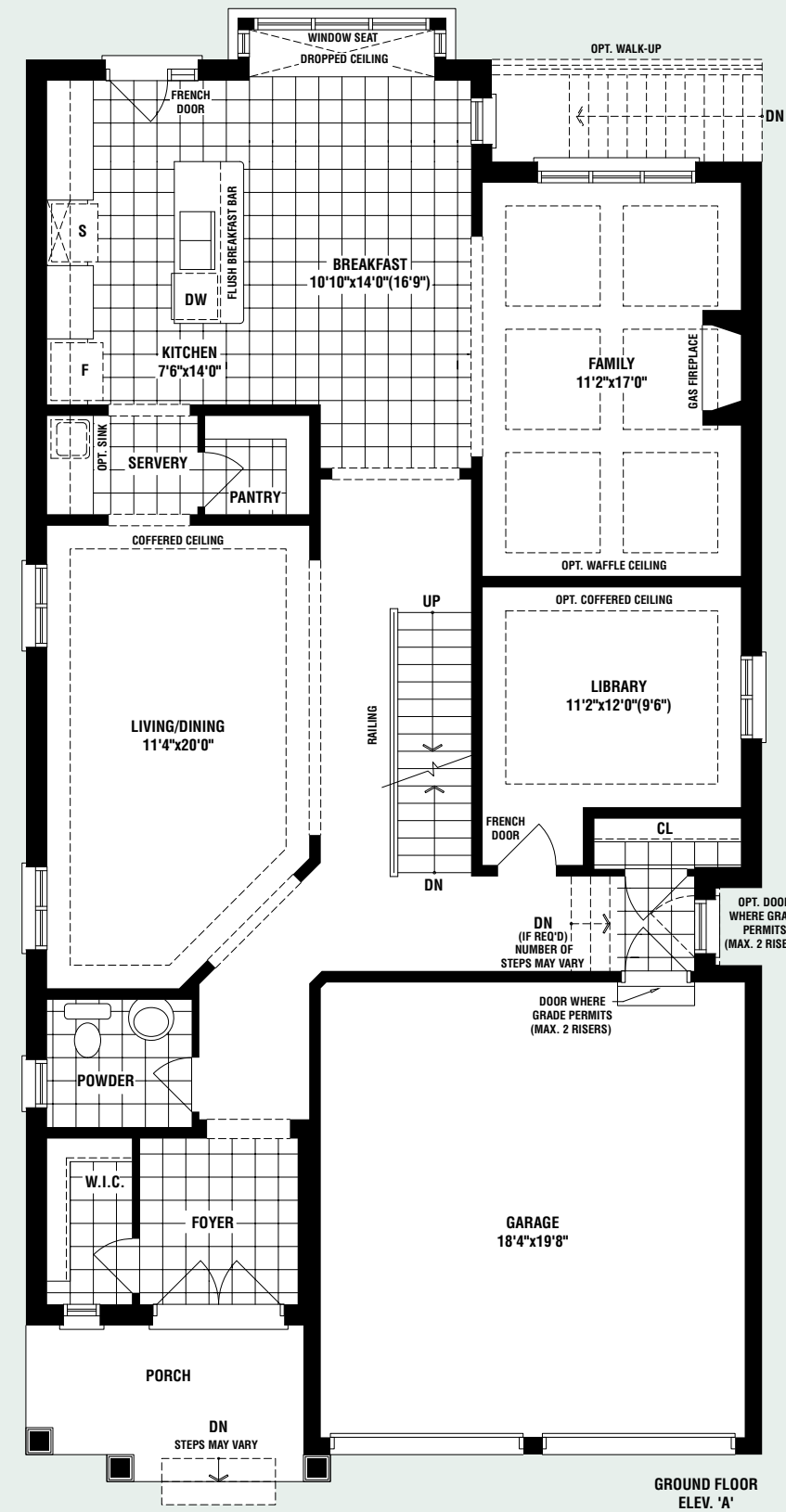
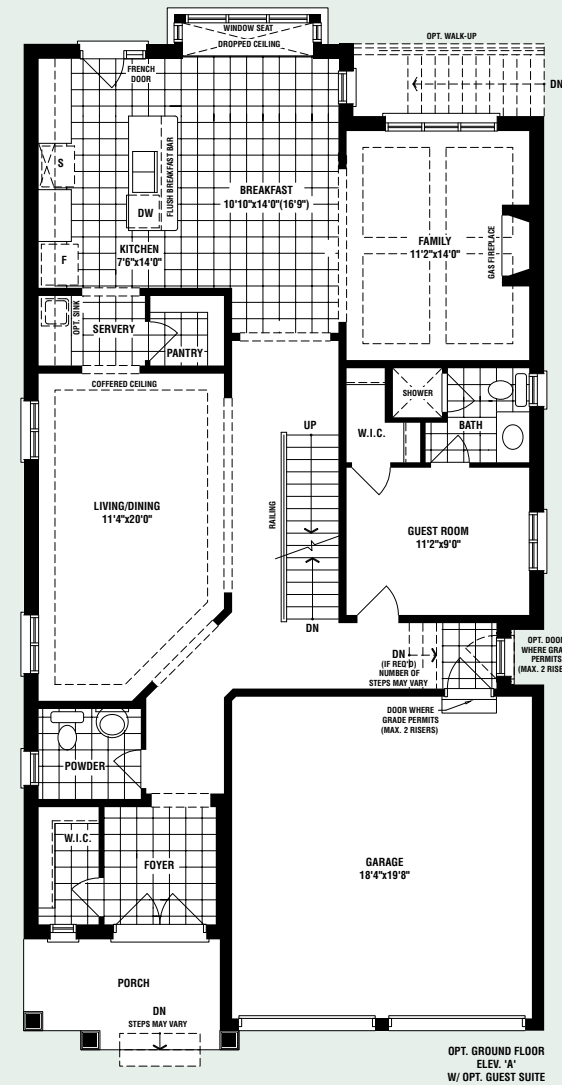
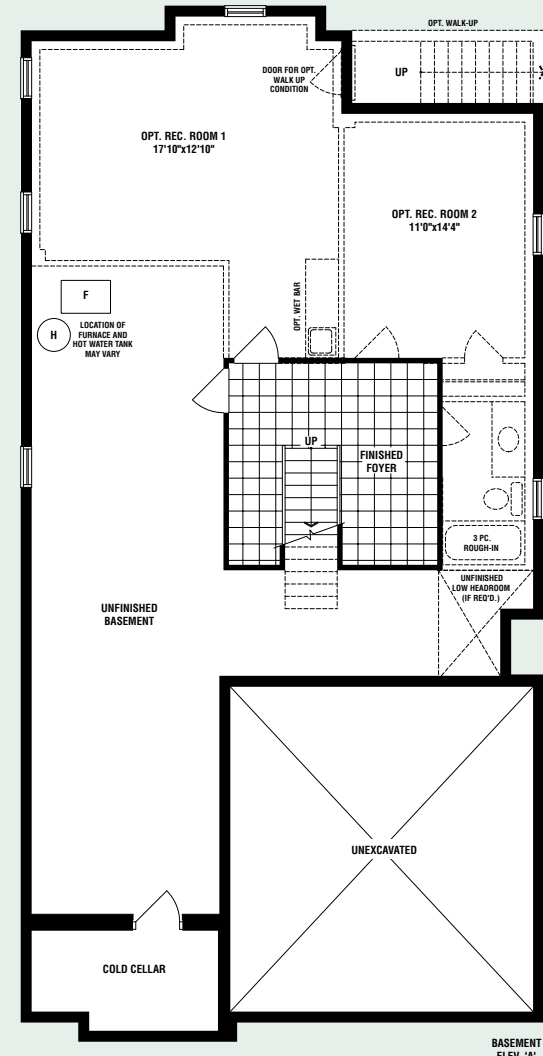
VB-3

3,217 SQ. FT.
ELEV. A

3,234 SQ. FT.
ELEV. B

3,224 SQ. FT.
ELEV. C

INCLUDES 160 SQ. FT.
OF FINISHED FOYER IN BASEMENT



Materials, specifications, and floor plans are subject to change without notice. All house renderings are artist's conceptions. All floor plans are approximate dimensions. Actual usable floor space may vary from the stated floor area. Number of steps on front elevation may vary depending on grade conditions. E. & O.E.