



ELEV. A



ELEV. B

Russell Corner 37-7C

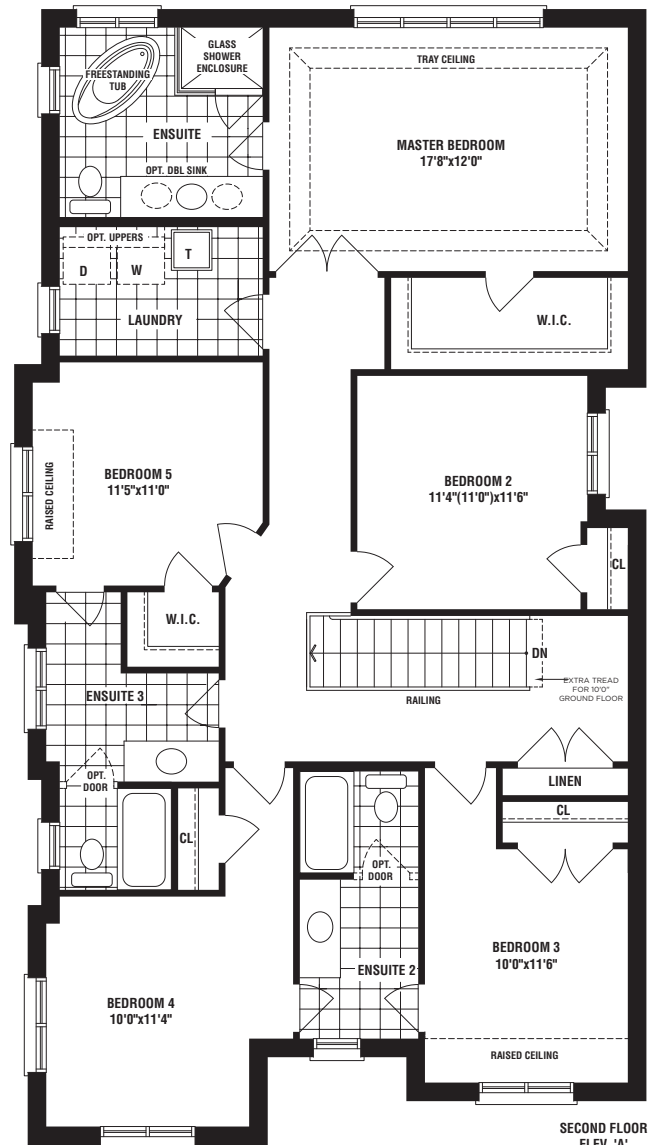
2,922 / 2,979 SQ. FT.

ELEV. A

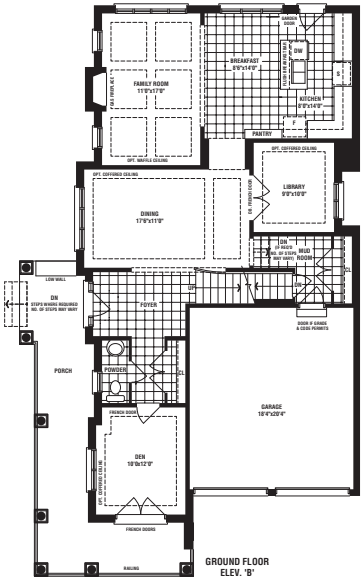
ELEV. B



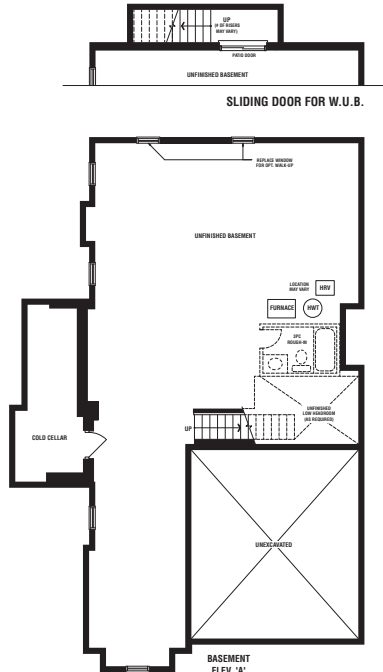
GROUND FLOOR
ELEV. 'A'



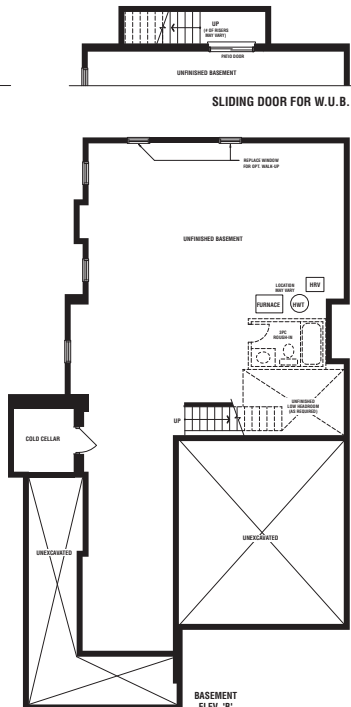
SECOND FLOOR
ELEV. 'A'



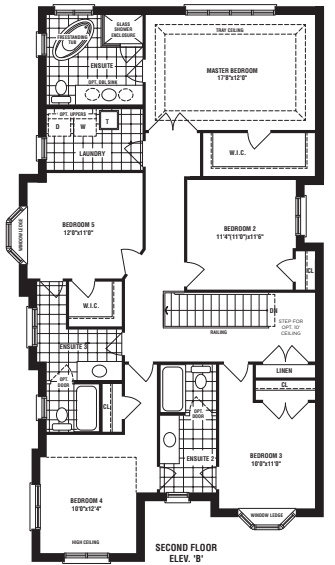
GROUND FLOOR
ELEV. 'B'



BASEMENT
ELEV. 'A'



BASEMENT
ELEV. 'B'



SECOND FLOOR
ELEV. 'B'

Russell Corner 37-7C

2,922 / 2,979 SQ. FT.

ELEV. A

ELEV. B