

SUMMIT

LYNDE

MCLEOD

SUMMIT

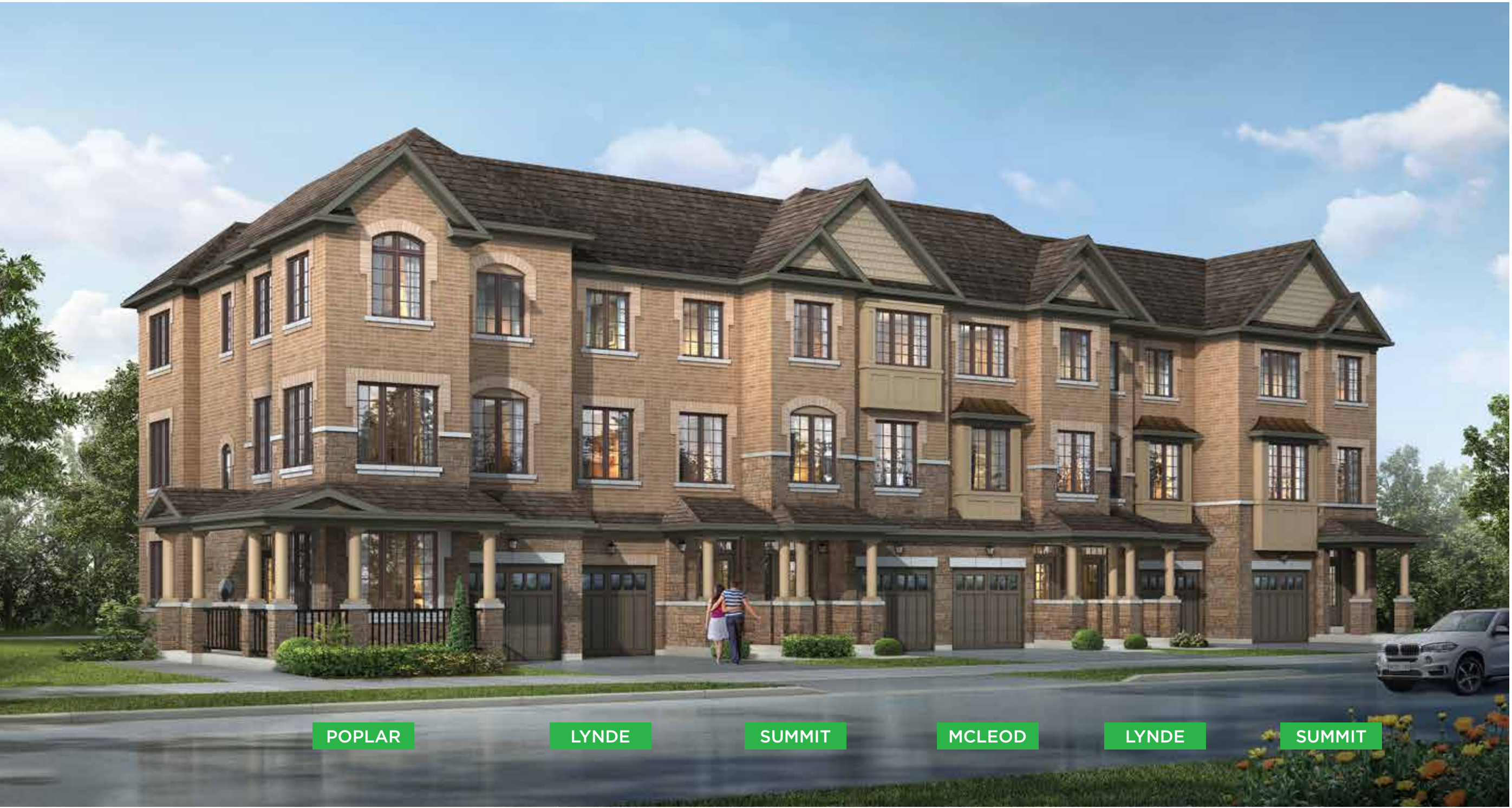
LYNDE

POPLAR



TOWNHOME

ELEVATION A



POPLAR

LYNDE

SUMMIT

MCLEOD

LYNDE

SUMMIT



TOWNHOME

ELEVATION B





18'

SUMMIT END

2,077 SQ. FT.
ELEV. A

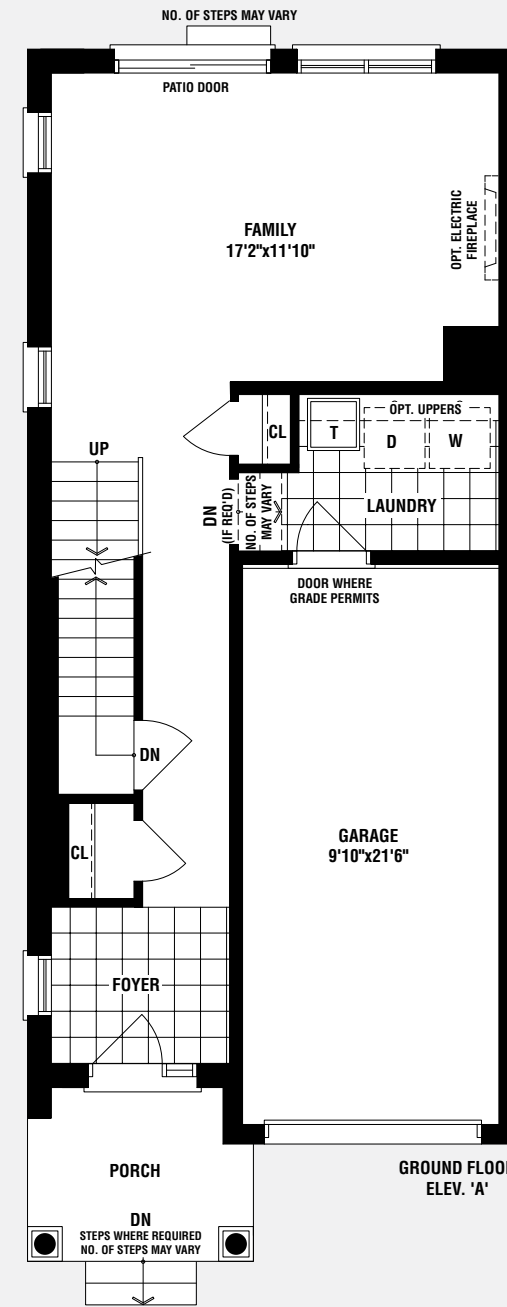
2,073 SQ. FT.
ELEV. B



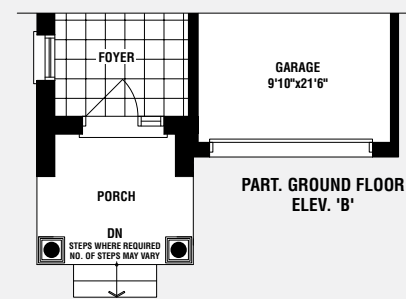
ELEV. A



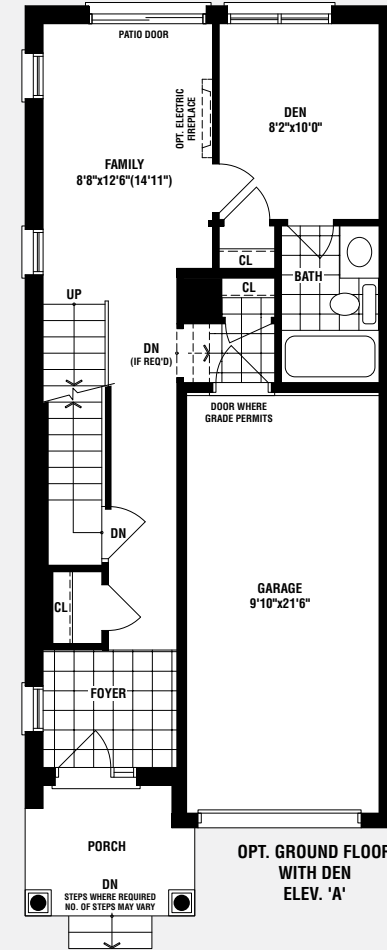
ELEV. B



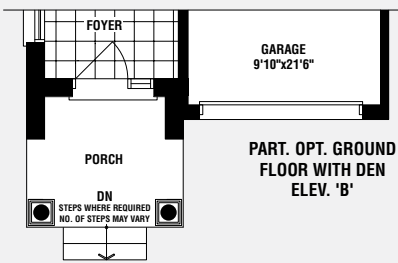
GROUND FLOOR
ELEV. 'A'



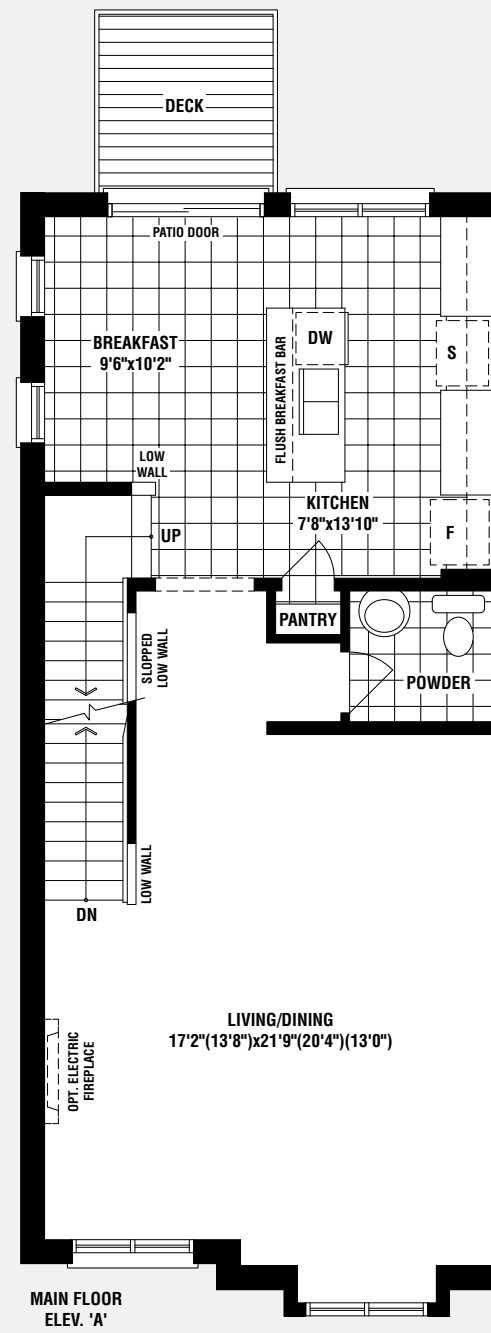
PART. GROUND FLOOR
ELEV. 'B'



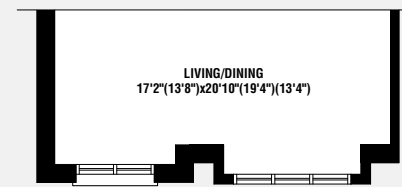
OPT. GROUND FLOOR
WITH DEN
ELEV. 'A'



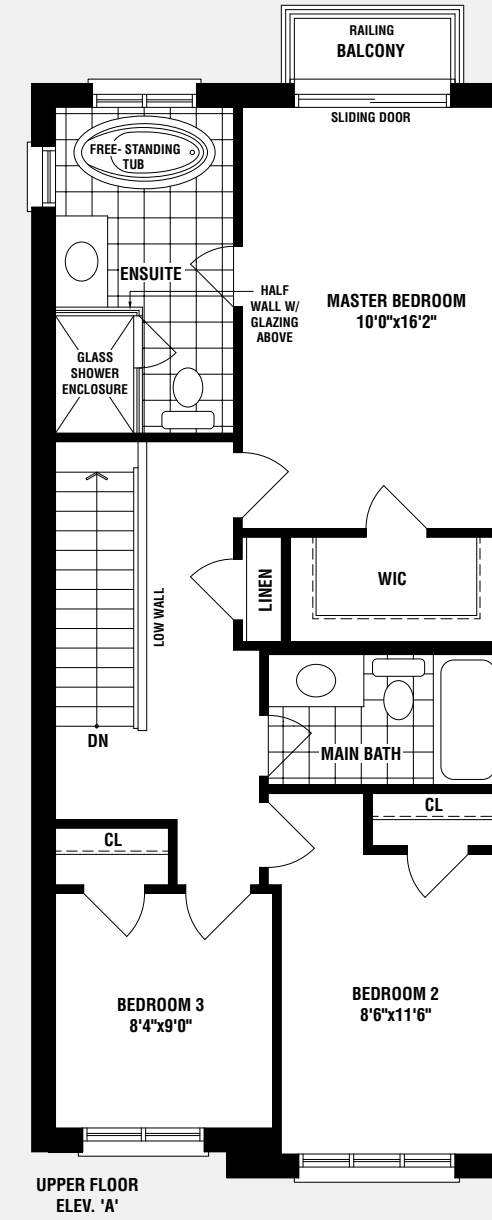
PART. OPT. GROUND FLOOR
WITH DEN
ELEV. 'B'



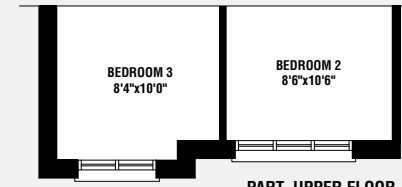
MAIN FLOOR
ELEV. 'A'



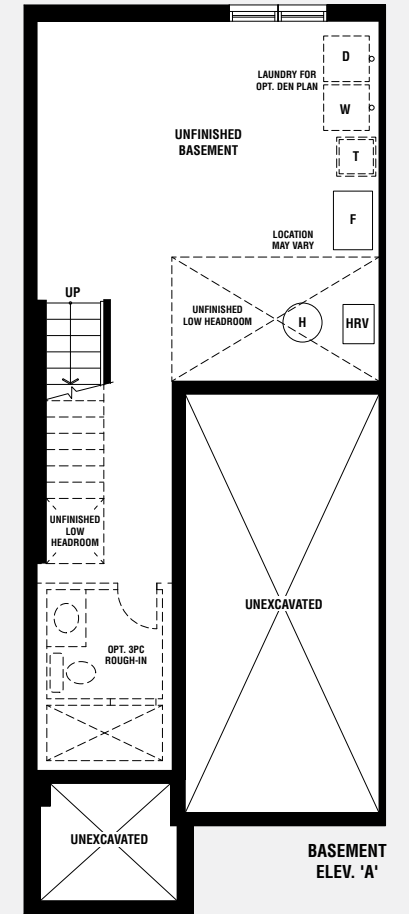
PART. MAIN FLOOR
ELEV. 'B'



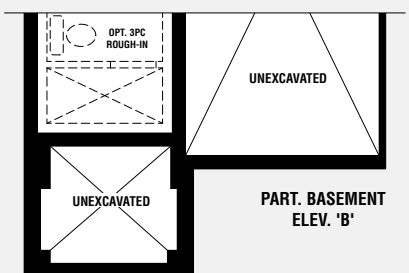
UPPER FLOOR
ELEV. 'A'



PART. UPPER FLOOR
ELEV. 'B'



BASEMENT
ELEV. 'A'



PART. BASEMENT
ELEV. 'B'

Materials, specifications, and floor plans are subject to change without notice. All house renderings are artist's conceptions. All floor plans are approximate dimensions. Actual usable floor space may vary from the stated floor area. Number of steps on front elevation may vary depending on grade conditions. E. & O.E. TH18-3 E