

SUMMIT

LYNDE

MCLEOD

SUMMIT

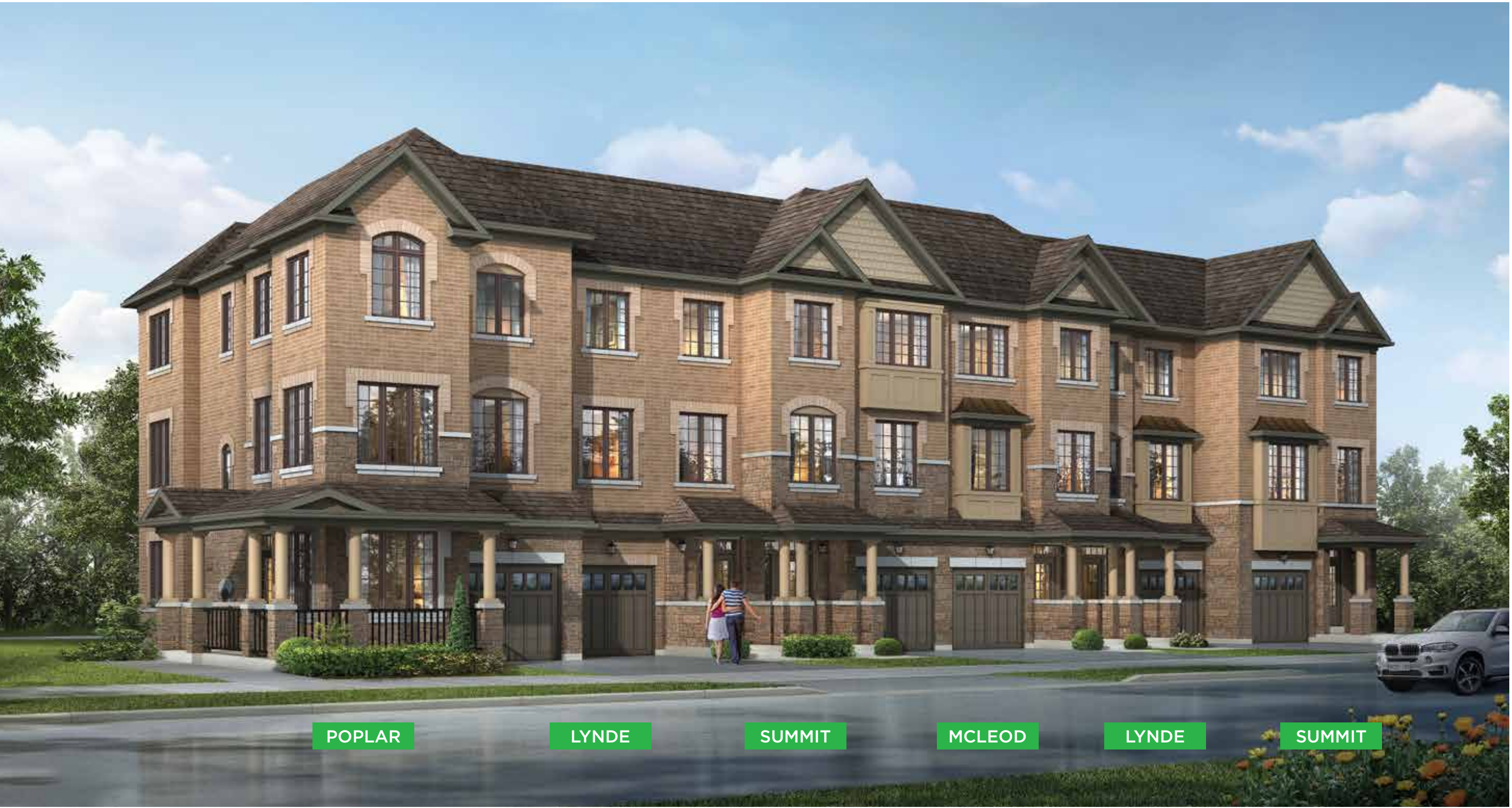
LYNDE

POPLAR



TOWNHOME

ELEVATION A



POPLAR

LYNDE

SUMMIT

MCLEOD

LYNDE

SUMMIT



TOWNHOME

ELEVATION B





18'

# POPLAR CORNER

2,329 SQ. FT.  
ELEV. A

2,323 SQ. FT.  
ELEV. B

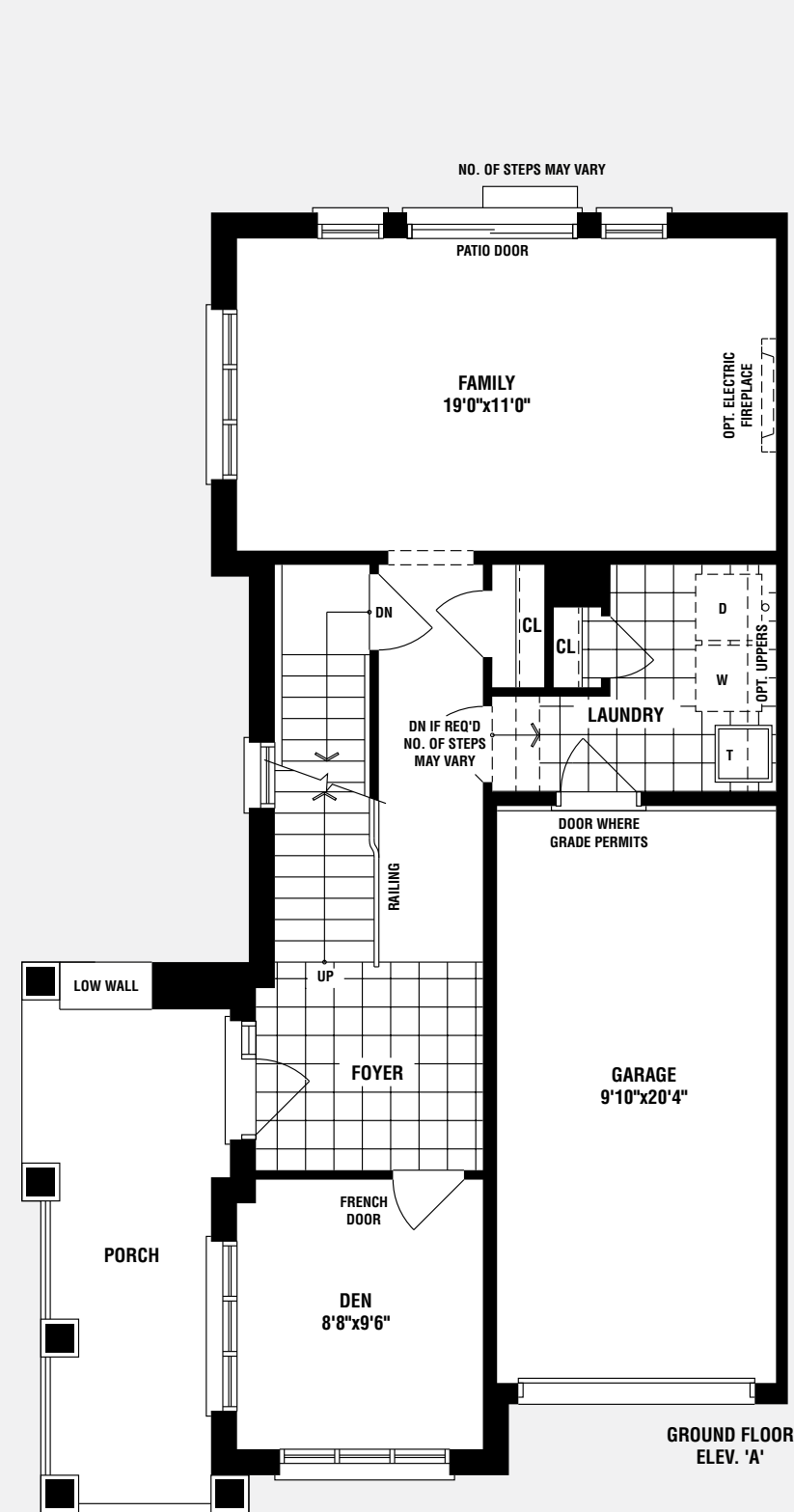


ELEV. A

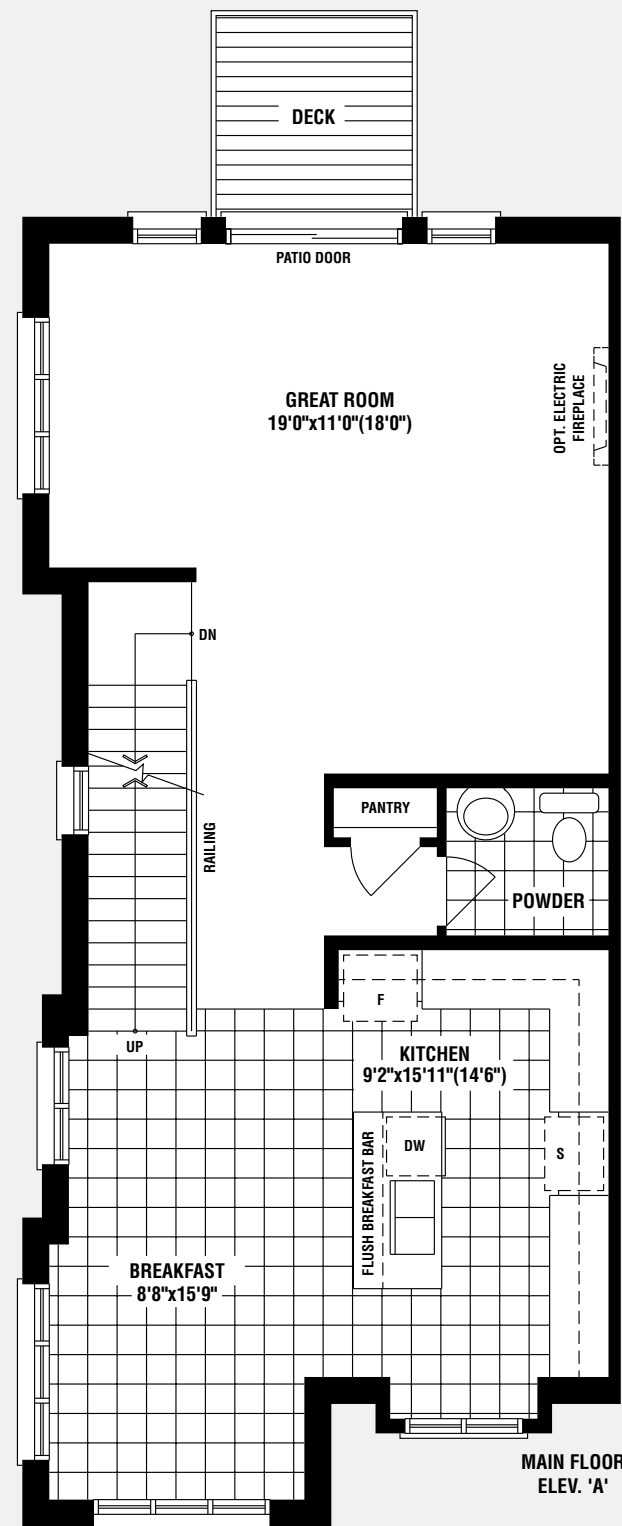


ELEV. B

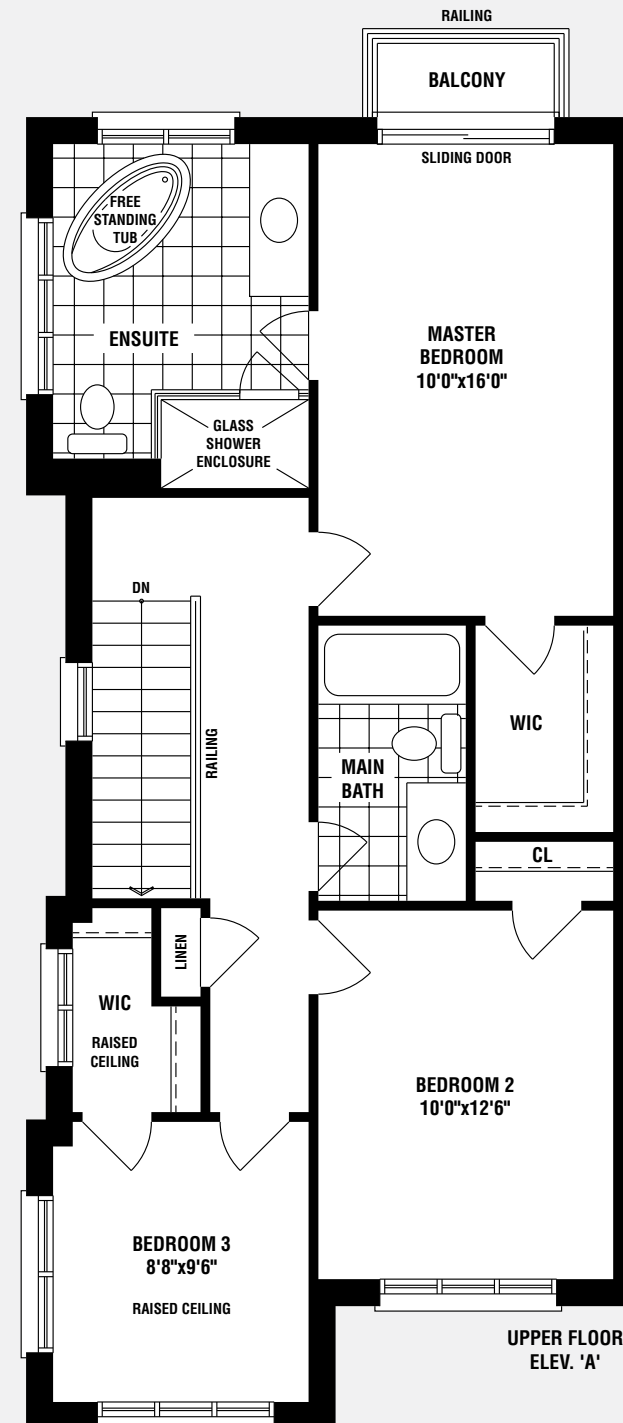
Materials, specifications, and floor plans are subject to change without notice. All house renderings are artist's conceptions. All floor plans are approximate dimensions. Actual usable floor space may vary from the stated floor area. Number of steps on front elevation may vary depending on grade conditions. E. & O.E. TH18-4 C



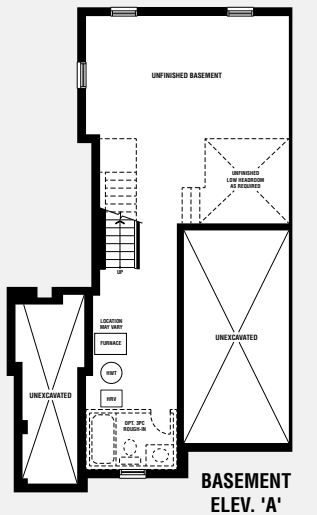
GROUND FLOOR  
ELEV. 'A'



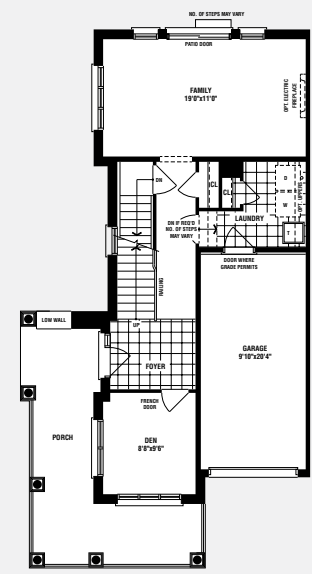
MAIN FLOOR  
ELEV. 'A'



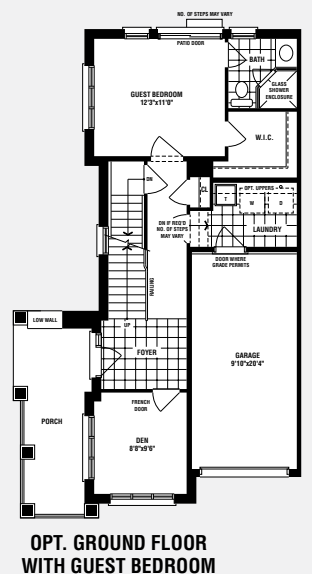
UPPER FLOOR  
ELEV. 'A'



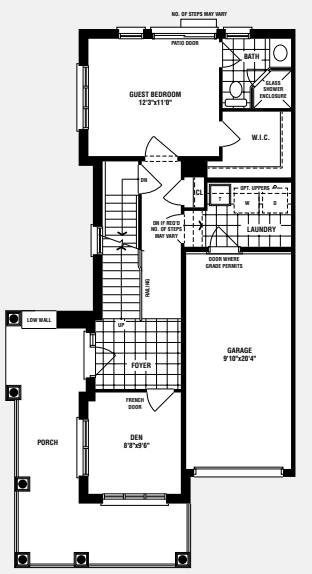
BASEMENT  
ELEV. 'A'



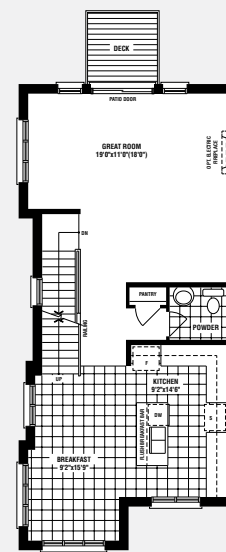
GROUND FLOOR  
ELEV. 'B'



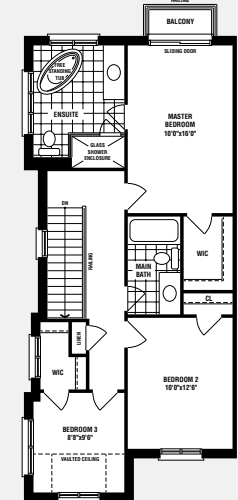
OPT. GROUND FLOOR  
WITH GUEST BEDROOM  
ELEV. 'A'



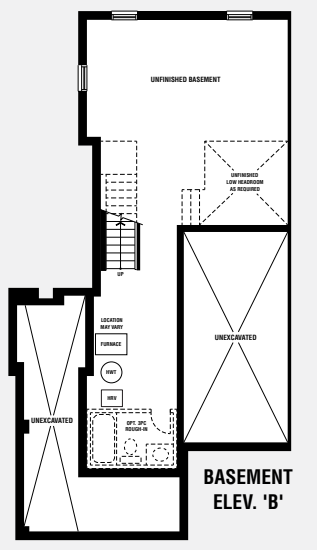
OPT. GROUND FLOOR  
WITH GUEST BEDROOM  
ELEV. 'B'



MAIN FLOOR  
ELEV. 'B'



UPPER FLOOR  
ELEV. 'B'



BASEMENT  
ELEV. 'B'